

Panasonic Solution Developer Network

Panasonic is offering a PBX partner program (Panasonic Solution Developer Network for Communication Products) to offer integration between Panasonic PBX and 3rd party vendor applications. For the software vendors registered in the program, Panasonic provides the latest technical specification and support to our partners interoperability testing. The 3rd party vendor successfully tested the software product stated in this solution leaflet, in accordance with the 'self-test' specification provided by Panasonic.



Nurse Call Integration

► Type of Business and Merit

- Type of Business : Retirement Residences, Assisted Living Facilities, Nursing Homes, Long Term Care facilities
- Merit : Unlimited Care Points and Access Points, 64 Groups, 8 Time Shifts, High quality health services - patient satisfaction, Increased medical staff efficiency

► Application Name - Vendor

Direct Care Connect™ - Poltys Inc.

► Overview

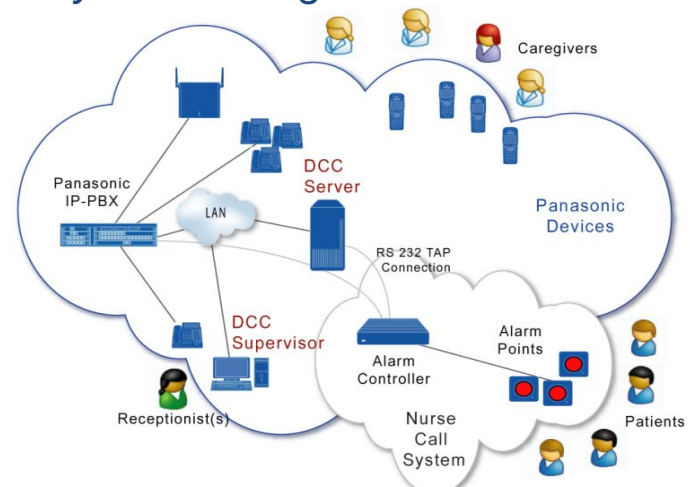
Poltys Direct Care Connect™ (DCC™) solution helps Assisted living Facilities and Nursing Homes managing the communications and the personnel effectively, providing:

- Help within healthcare organizations to manage their communications more effectively
- Direct, Locate and Prioritize information for clinicians and their patients
- Continuous wireless connectivity between: nurses, caregivers, coordination desks, and patients

► Main Feature

- Immediate text display of patient, room and call status
- Direct callback to patient room speaker
- Automatic forwarding to alternate caregiver
- Automatic patient assignment by shift
- Dynamic text messaging from Caregiver Receptionist workstation
- Real-time alarm, queue and caregiver status
- Three Alarm Escalation Levels with email notifications
- Fully programmable patient-caregiver-group assignments with individual alarm priorities
- Comprehensive alarm and actions logging with customizable reports
- Send alarms by SMSs and E-mails
- Extend the alarm lifecycle after its confirmation until the caregiver cancel it explicitly (AUSTCO, COMP2)
- New report for extended alarm lifecycle (AUSTCO, COMP2)

► System Configuration



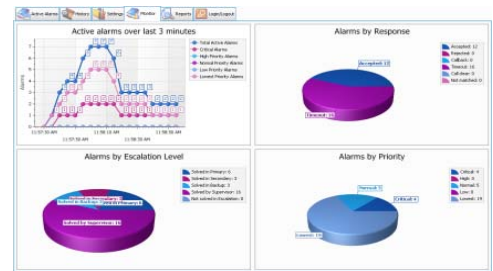
Nurse Call Systems that integrates with DCC : TM

General Electric(GE StaffCall Pro, GE Dukane 6000), Rauland Borg, Eiris (Eiris-EV2, Eiris-TAP), Telergy, Visonic Spider, AUSTCO-UDP, Homefree, COMP 2, Systems Technologies

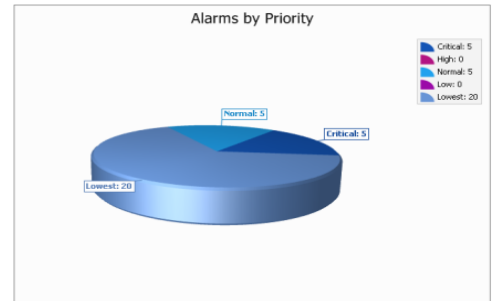
► Features

- Real-time Alarm Information
 - All Active Alarms over last 3 minutes
 - Alarm grouped by Response: Alarms Answer, Callback, Rejected, Timeout
 - Escalation level for solving
 - Alarm grouped by Priority
- Alarm History
 - Alarm Time and Date, Alarm Priority, Alarm Point, Response, Wait Time
 - Care Point involved in the Alarm
- Real-time statistics
- Alarm Point Reports
- Care Point Reports
- Response Time Distribution Report
- Date Selection
- Time Division
- Schedule to Print, Export, Send via Email

Supervisor Window



Alarms by Priority Chart



Alarm History

Alarm ID	AlarmPoint	Priority	Response	Start Time	Wait Time (s)	AlarmMessage	SolvedStage
120	R14	5-Lowest	Timeout	3/23/2007 11:43 AM	97	BED	Supervisor
120	R14	5-Lowest	Timeout	3/23/2007 11:57 AM	96	BED	Supervisor
120	R20	3-Abnormal	Timeout	3/23/2007 11:47 AM	96	CHORD	Supervisor
120	R20	3-Abnormal	Timeout	3/23/2007 1:56 PM	95	CHORD	Supervisor
130	R16	3-Abnormal	Timeout	3/23/2007 11:47 AM	94	CHORD	Supervisor
120	PriorityWalter	1-Critical	Timeout	3/23/2007 11:57 AM	93	Call Reception Fine	Supervisor
120	R14	5-Lowest	Timeout	3/23/2007 11:46 AM	93	BED	Supervisor
120	PriorityWalter	1-Critical	Accepted	3/23/2007 11:43 AM	65	Call Reception Fine	Backup
130	R16	5-Lowest	Accepted	3/23/2007 6:52 PM	61	BED	Backup
120	R14	5-Lowest	Accepted	3/23/2007 6:52 PM	57	BED	Backup
120	R14	5-Lowest	Accepted	3/23/2007 11:57 AM	56	BED	Secondary
120	R14	1-Critical	Call New	3/23/2007 4:03 PM	49	Staff	Backup
130	R16	5-Lowest	Accepted	3/23/2007 11:57 AM	42	BED	Secondary
130	R16	5-Lowest	Accepted	3/23/2007 4:03 PM	40	BED	Secondary
120	R14	4-Line	Accepted	3/23/2007 4:00 PM	37	Staff	Secondary
130	R16	4-Line	Accepted	3/23/2007 3:50 PM	37	BED	Secondary
120	R14	4-Line	Accepted	3/23/2007 4:00 PM	34	Staff	Secondary
130	R16	5-Lowest	Accepted	3/23/2007 11:57 AM	33	BED	Secondary
160	R14	5-Lowest	Accepted	3/23/2007 6:52 PM	26	BATH	Primary
120	PriorityWalter	1-Critical	Accepted	3/23/2007 11:57 AM	25	Call Reception Fine	Primary

► System Requirement

PBX

Supported PBX	Panasonic KX-TDA100/200/600, KX-TDE100/200/600, KX-NCP500/1000
Connection	LAN / USB

Vendor Application

OS	Microsoft® Windows® XP Professional (SP3) Microsoft® Windows Vista® Business SP1, SP2 (UAC disabled) Microsoft® Windows® 7 Professional (UAC disabled) Microsoft® Windows® 8, including Pro version (UAC disabled) Microsoft® Windows Server® 2003 SP2 Microsoft® Windows Server® 2008 R2 SP1 (UAC disabled) Microsoft® Windows Server® 2012 (UAC disabled)
CPU	Pentium® 4 2.5GHz (or higher)
RAM	1024 MB (or higher)
HDD	10 GB Minimum (installation)

► Application Vendor Information



Company Name: Polty's Inc.

Address: 3300 N. Main Street, Suite D Anderson, SC 29621-4128, USA

Web: <http://www.polty's.com/>

E-mail: sales@polty's.com

Panasonic
Solution
Developer
Network

**Gold
Partner**

The above solution is based on written or verbal information received by Panasonic System Networks Co., Ltd. ("Company") from Panasonic Solution Developer Network for Communication Products member companies and may not have been independently verified by Company. Company DISCLAIMS ANY AND ALL PROMISES, REPRESENTATIONS, AND WARRANTIES, EXCEPT AS EXPRESSLY SET FORTH IN THIS DOCUMENT, WITH RESPECT TO INFORMATION FURNISHED TO YOU BY THIS DOCUMENT, INCLUDING THEIR CONDITION; CONFORMITY TO ANY REPRESENTATION OR DESCRIPTION; THE EXISTENCE OF ANY LATENT OR PATENT DEFECTS; AND TITLE, MERCHANTABILITY, OR FITNESS FOR A PARTICULAR PURPOSE OR USE. Prior specifying any these solutions for a particular application, you should verify the actual functionality of such solution. If you want information about above solution, please contact the above address. Design and specifications are subject to change without notice. The images shown of base unit display and lams are composite images. Microsoft and Windows are either registered trademarks or trademarks of Microsoft Corporation in the United States and/or other countries. Intel and Pentium are trademarks or registered trademarks of Intel Corporation or its subsidiaries in the United States and other countries. Other trademarks and trade names are those of their respective owners.